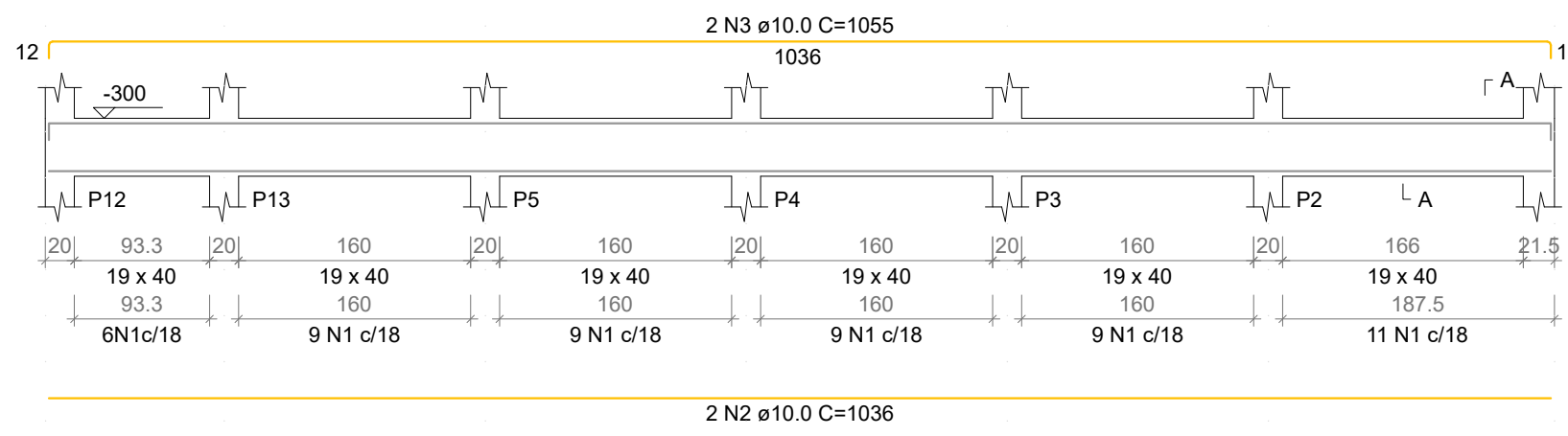
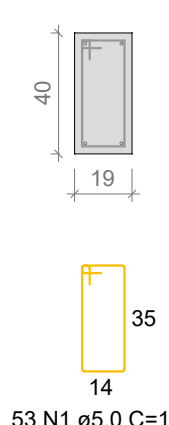


V201
ESC 1:50

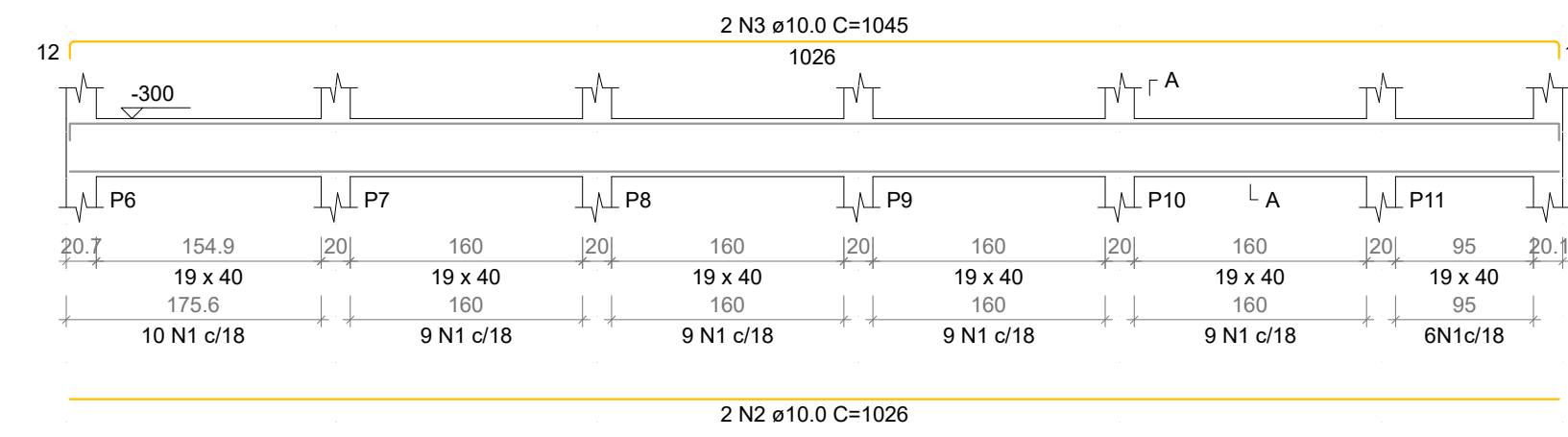


SEÇÃO A-A
ESC 1:25

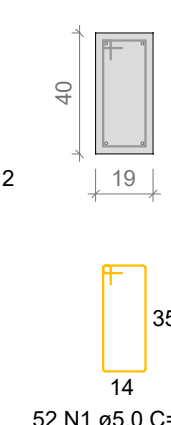


53 N1 ø5.0 C=109

V202
ESC 1:50

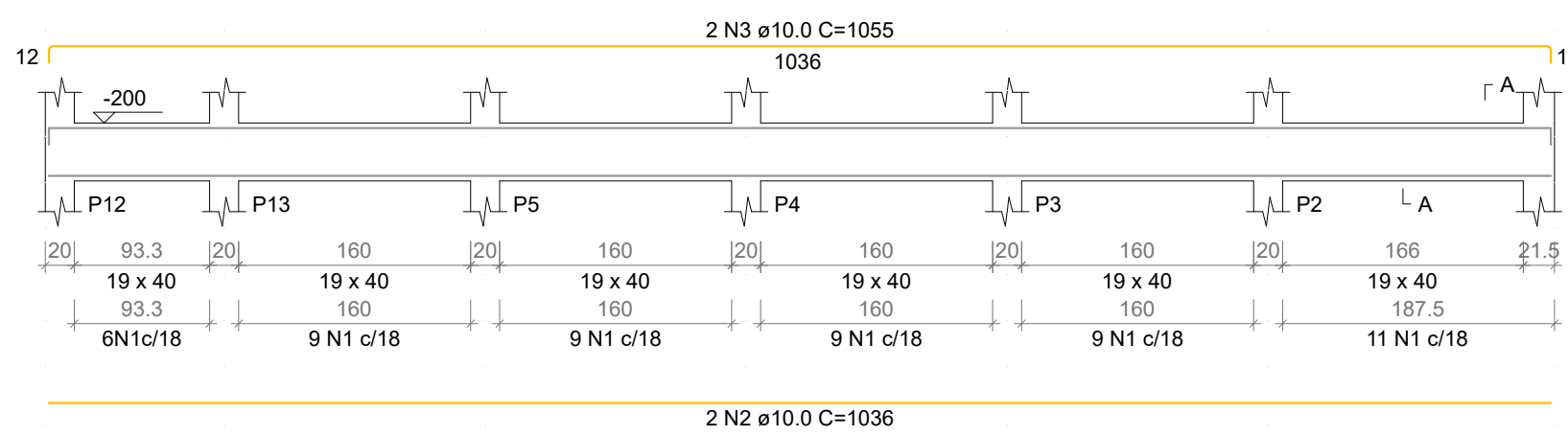


SEÇÃO A-A
ESC 1:25

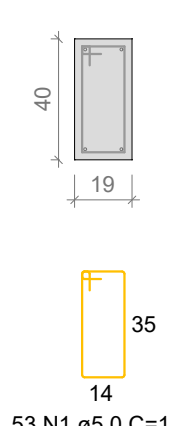


52 N1 ø5.0 C=109

V301
ESC 1:50

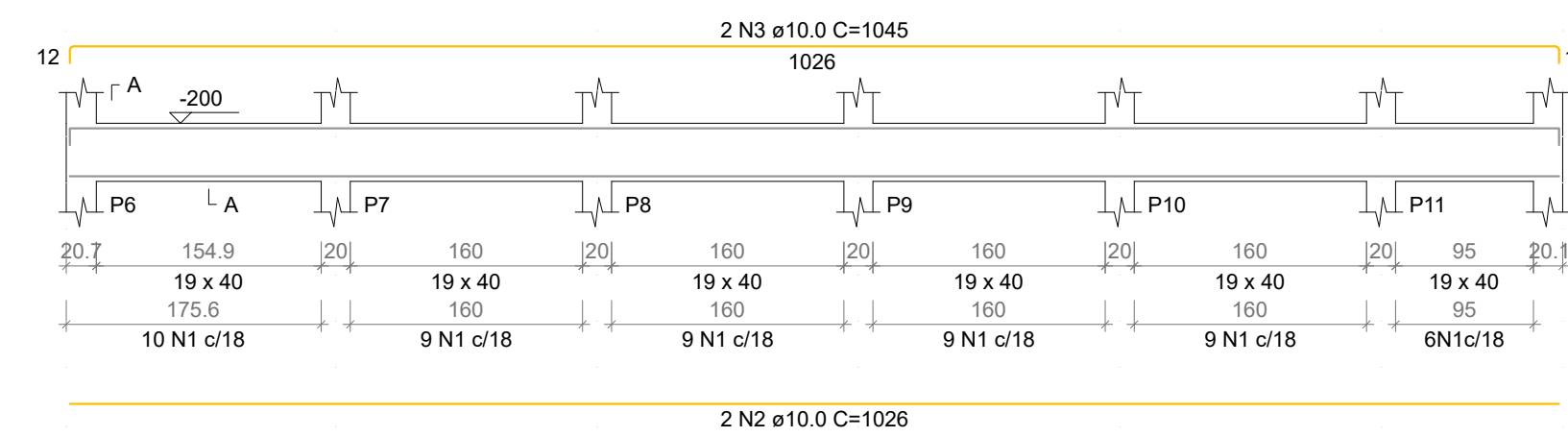


SEÇÃO A-A
ESC 1:25

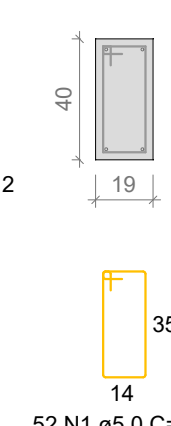


53 N1 ø5.0 C=109

V302
ESC 1:50

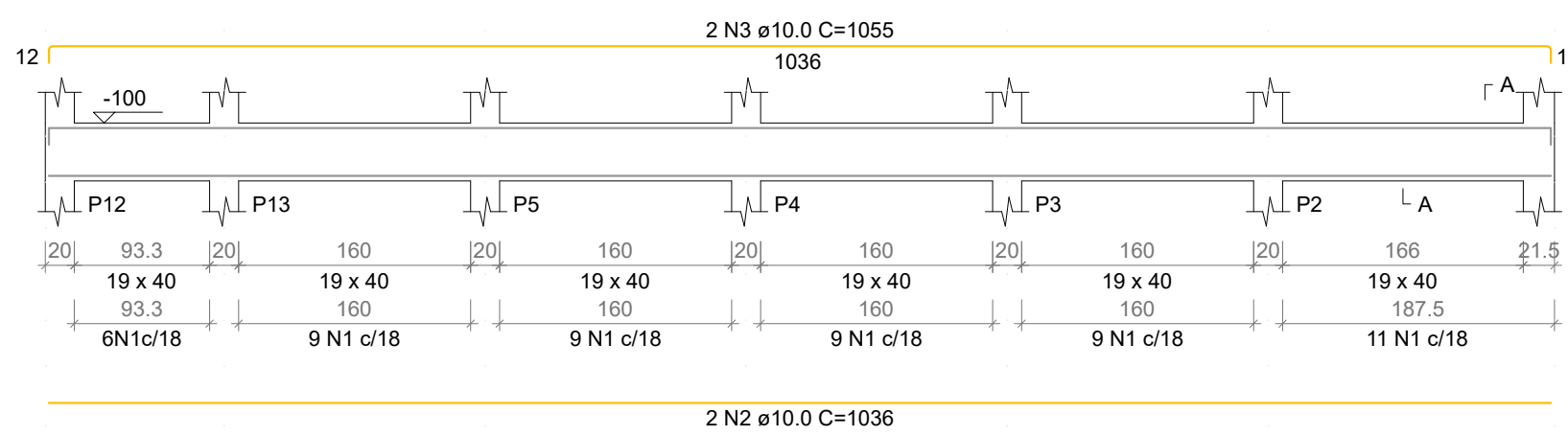


SEÇÃO A-A
ESC 1:25

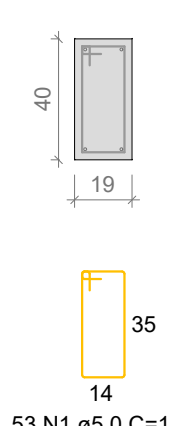


52 N1 ø5.0 C=109

V401
ESC 1:50

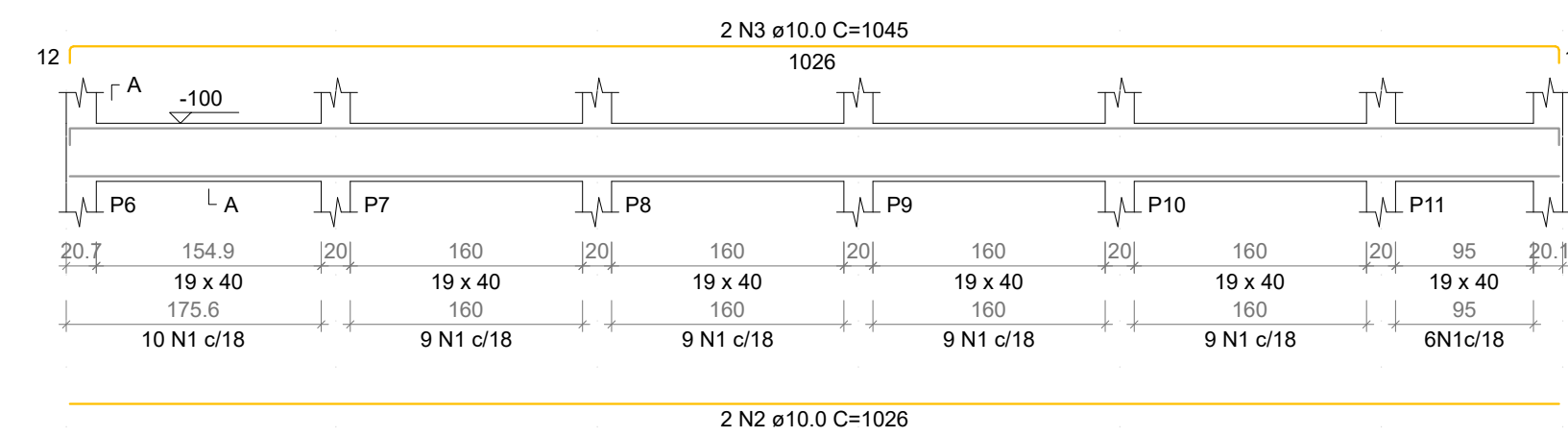


SEÇÃO A-A
ESC 1:25

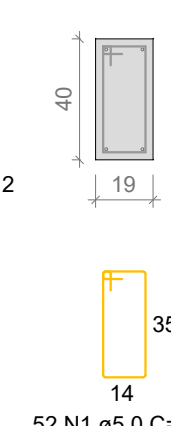


53 N1 ø5.0 C=109

V402
ESC 1:50

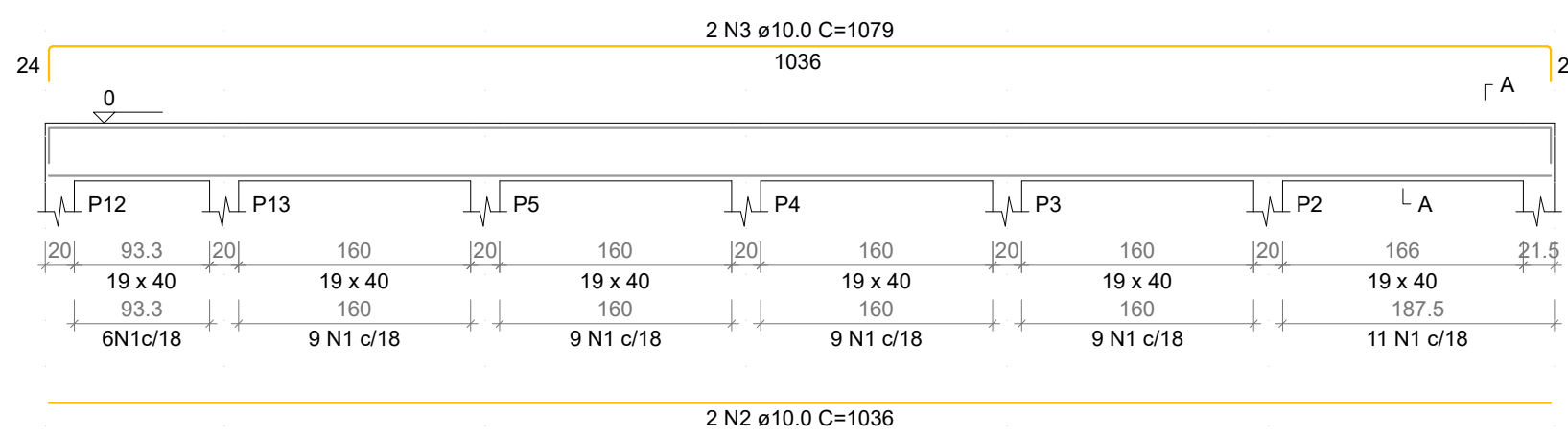


SEÇÃO A-A
ESC 1:25

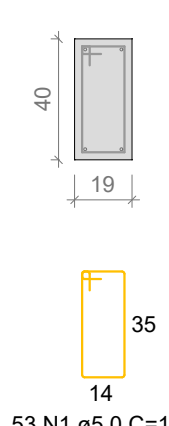


52 N1 ø5.0 C=109

V501
ESC 1:50

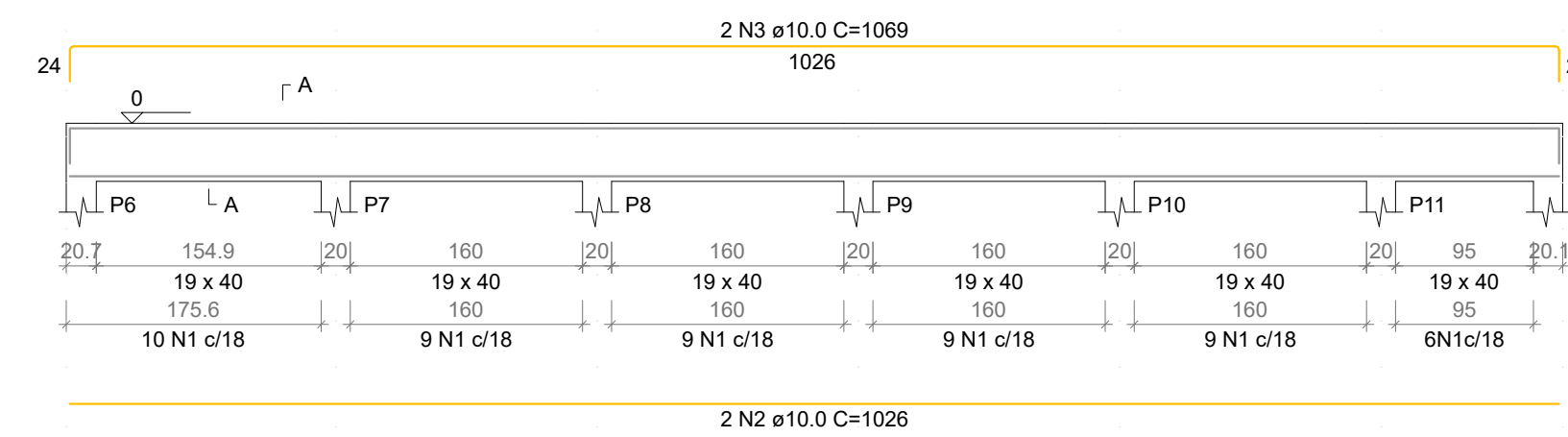


SEÇÃO A-A
ESC 1:25

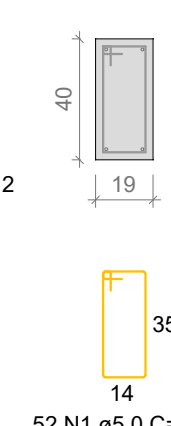


53 N1 ø5.0 C=109

V502
ESC 1:50



SEÇÃO A-A
ESC 1:25



52 N1 ø5.0 C=109

RELAÇÃO DO AÇO

ELEMENTO	AÇO	N	DIAM (mm)	QUANT	C.UNIT (cm)	C.TOTAL (cm)
V201-L2	CA60	1	5.0	53	109	5777
	CA50	2	10.0	2	1036	2072
	CA60	3	10.0	2	1055	2110
V202-L2	CA60	1	5.0	52	109	5688
	CA50	2	10.0	2	1026	2052
	CA50	3	10.0	2	1045	2090
V301-L3	CA60	1	5.0	53	109	5777
	CA50	2	10.0	2	1036	2072
	CA50	3	10.0	2	1055	2110
V302-L3	CA60	1	5.0	52	109	5688
	CA50	2	10.0	2	1026	2052
	CA50	3	10.0	2	1045	2090
V401-L4	CA60	1	5.0	53	109	5777
	CA50	2	10.0	2	1036	2072
	CA50	3	10.0	2	1055	2110
V402-L4	CA60	1	5.0	52	109	5688
	CA50	2	10.0	2	1026	2052
	CA50	3	10.0	2	1045	2090
V501-L5	CA60	1	5.0	53	109	5777
	CA50	2	10.0	2	1036	2072
	CA50	3	10.0	2	1079	2158
V502-L5	CA60	1	5.0	52	109	5688
	CA50	2	10.0	2	1026	2052
	CA50	3	10.0	2	1089	2138

RESUMO DO AÇO

AÇO	DIAM (mm)	C.TOTAL (m)	PESO + 10% (kg)
CA50	10.0	333.9	226.5
CA60	5.0	457.8	77.6
PESO TOTAL (kg)			
CA50	226.5		
CA60	77.6		

Volume de concreto (C-30) = 5.51 m³
Área de forma = 71.76 m²

ESCALA:	PROJETO ESTRUTURAL - VIGAS V200, V300, V400 E V500	FOLHA:	08/09
INDICADA			

PROJETO: MURO CÂMARA MUNICIPAL DE OURO FINO
 PROPRIETÁRIO: CÂMARA MUNICIPAL DE OURO FINO
 LOCAL: R. Rogério Gissoni, 450 - Centro, Ouro Fino - MG, 37570-000

SITUAÇÃO SEM ESCALA: Declaro que a aprovação do projeto não implica no reconhecimento, por parte da Prefeitura, do direito de propriedade.

PROPRIETÁRIO:
CÂMARA MUNICIPAL DE OURO FINO
CNPJ nº 25.652.371/0001-89

ÁREAS:

AUTOR DO PROJETO:
TIS SERVIÇOS DE ENGENHARIA LTDA
CNPJ: 43.646.354/0001-10
THIAGO ZUCCON E SILVA
ENGº CIVIL - CREA/MG 69963/D

Data: NOVEMBRO/2023